

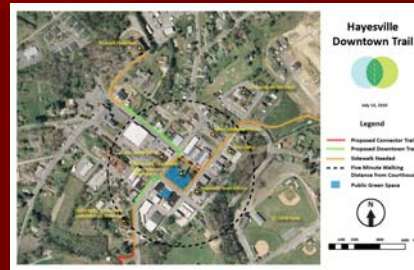
# Hayesville Downtown Improvement Projects

Martha Eberle DCA Intern Summer 2010

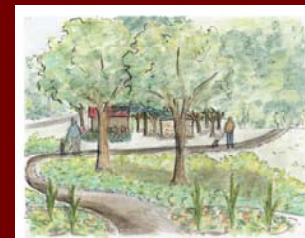


# Hayesville Downtown Improvement Projects

## Project #1: Hayesville Trail Network



## Project #2: Historical and Arts Council Museum



## Project #3: Courthouse Square



## Hayesville Trail Network

### First Phase: Connector trail between museum and CC/VFW Parks

- Primary Function: Provide a recreation trail for residents of Hayesville and students at Clay County Schools
- Improves the health of users through regular exercise opportunities
- Connects cultural assets of the community: museum, archaeological site



## Hayesville Trail Network

### Additional Phases: Connector trail from archaeological site to downtown and Peacock Playhouse

- Primary Function: Complete the trail loop to provides connections to other community resources
- Provides residents additional recreation opportunities and improved connectivity between various parts of town
- Provides visitors an easily navigable path to tour the downtown and other cultural assets of the community
- Provides expanded accessibility throughout town with sidewalk improvements



# Hayesville Trail Network

## Future Planning Opportunities

- Construction of Hayesville trails initiate the first steps in creating a comprehensive recreational trail system throughout the entire county
- A countywide trail network provides recreational opportunities and improved connectivity for residents
- The network would also be a valuable (and low-impact) draw for tourists seeking recreational activities



# Hayesville Trail Network



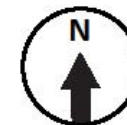
## Hayesville Greenway Trails



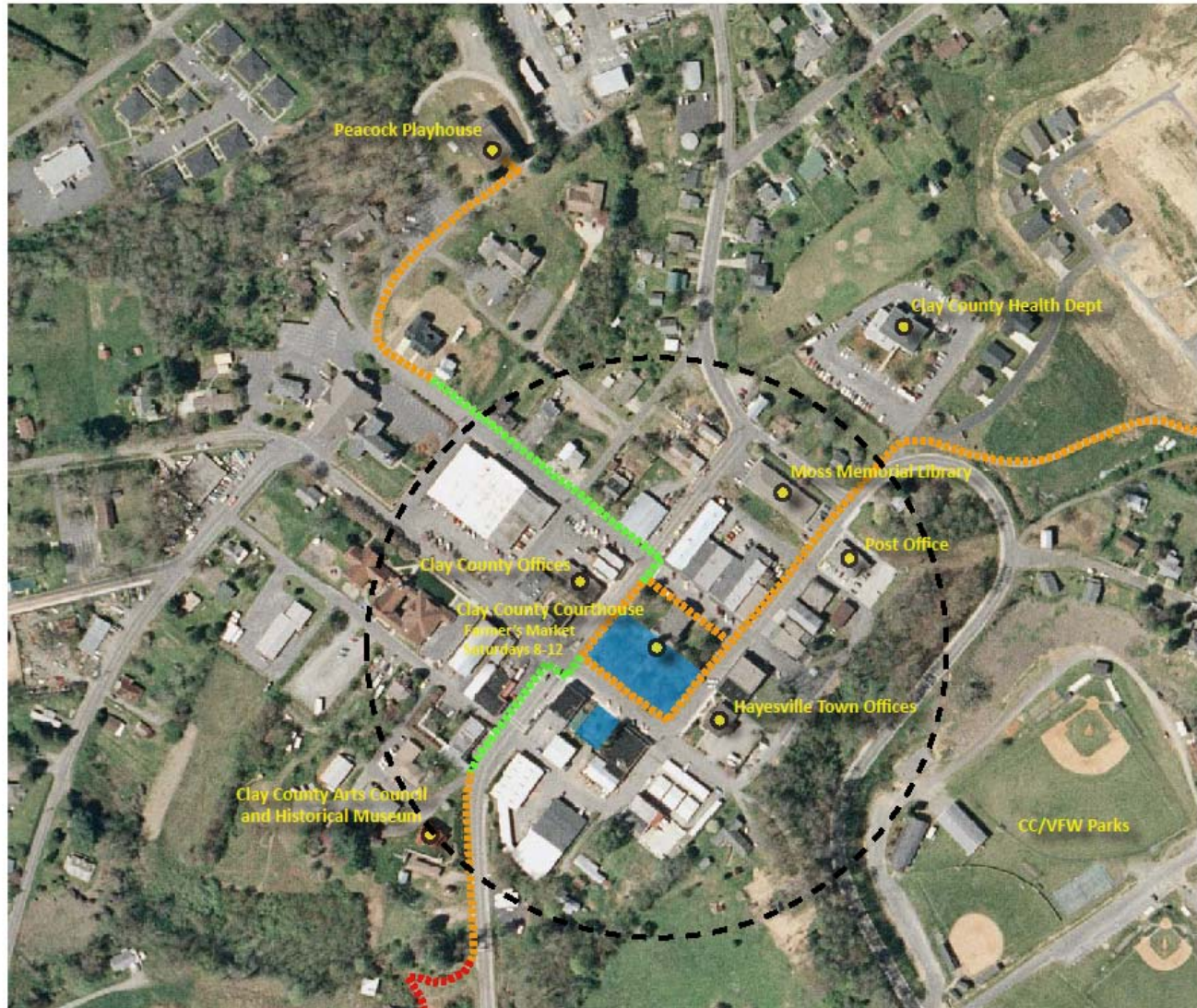
July 14, 2010

### Legend

- Existing Trail: Paved
- Proposed Connector Trail
- Possible Additional Trails
- Highway 64 Business
- Proposed Foot Bridge



# Hayesville Trail Network



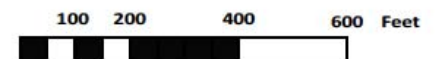
## Hayesville Downtown Trail



July 14, 2010

### Legend

- Proposed Connector Trail
- Proposed Downtown Trail
- Sidewalk Needed
- Five Minute Walking Distance from Courthouse
- Public Green Space



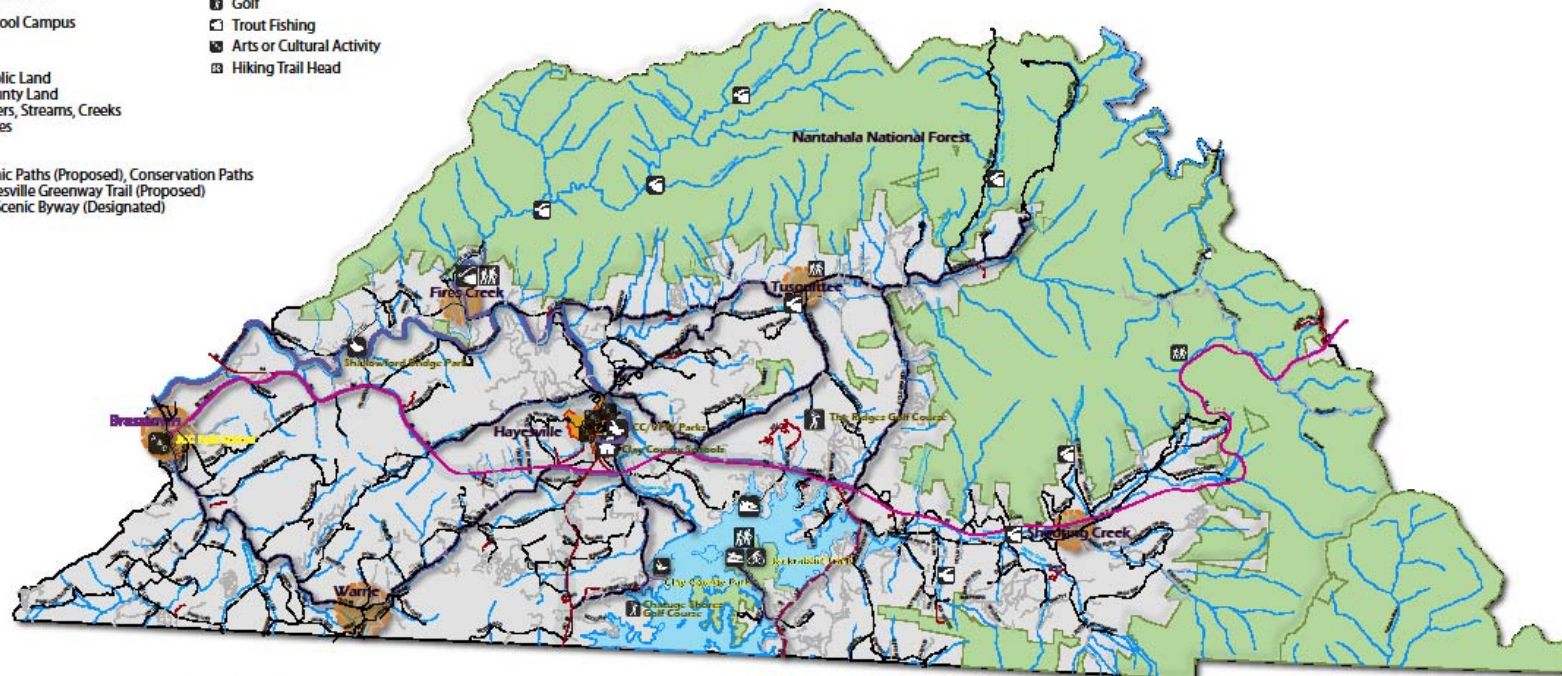
# Hayesville Trail Network

## Clay County Proposed Hiking and Biking Paths

Prepared by Kristy Carter and Martha Eberle 7/14/10

### LEGEND

- |                                               |                                     |
|-----------------------------------------------|-------------------------------------|
| <b>Town and Community</b>                     | <b>Recreation, Arts and Culture</b> |
| ● Community / Rural Crossroad                 | ☐ Boat Ramp                         |
| ● Hayesville                                  | ☐ Bicycling                         |
| <b>Civic Facilities</b>                       | ☐ Playground                        |
| ☐ School Campus                               | ☐ Golf                              |
| <b>Land</b>                                   | ☐ Trout Fishing                     |
| ■ Public Land                                 | ☐ Arts or Cultural Activity         |
| ■ County Land                                 | ☐ Hiking Trail Head                 |
| ■ Rivers, Streams, Creeks                     |                                     |
| ■ Lakes                                       |                                     |
| <b>Paths</b>                                  |                                     |
| — Scenic Paths (Proposed), Conservation Paths |                                     |
| — Hayesville Greenway Trail (Proposed)        |                                     |
| — NC Scenic Byway (Designated)                |                                     |



0 0.450.9 1.8 2.7 3.6 Miles



# Clay County Historical and Arts Council Museum

---

## **Pedestrian and Parking Improvements**

- Sidewalk construction along Bus 64 and up to parking lot at main building with wheelchair accessibility
- Construction of a nature trail through the site down to the creek and linking up with the proposed Hayesville connector trail
- Parking lot at main building with landscape improvements to the lot
- Additional parking at lower level with wheel chair accessibility and drop off area
- Designated crosswalk across Bus 64 at lower parking lot

## **Proposed Improvements: Main Building**

- Expand the existing patio in front of building to create additional space for events or leisure
- Further develop the axial relationship between the building and the downtown courthouse square through sight lines and additional pathway
- Plant additional trees in front to reinforce axial relationship and provide shade to visitors
- Rebuild/repair terraces along the east side of property and plant with low-maintenance trees and shrubs with a focus on native plants
- Continue to improve the Cherokee garden along existing stairs

## Clay County Historical and Arts Council Museum

---

### Proposed Improvements: Cherokee Village

- Plant low shrubs around the base of the main interpretive wall and along the top terrace of the wall (to eliminate maintenance requirements)
- Plant large deciduous trees for shade
- Provide moveable seating for small groups under shade trees near summer house
- Create walking path through exhibit connecting to main trail
- Continue developing terraced garden on west hillside
- Plant additional shrubbery around houses (native to region)

### Proposed Improvements: Pioneer Village

- Keep some existing pines near house and plant additional trees for shade
- Establish an orchard south of the main house
- Plant a pioneer garden (herbs, flowers) adjacent to the house
- Addition of barn to represent building styles of region

## Clay County Historical and Arts Council Museum

---

### Natural Science Education Area

- Additional building to house natural science exhibits and provide classroom and activity space (with green roof accessible from north)
- Construction of nature trail through property to provide opportunities for wildlife viewing
- Construction of an outdoor classroom/amphitheatre
- Construction of picnic shelter near creek
- Develop a native ricer cane grove near the creek for use in Cherokee projects on site and in the Qualla Boundary
- Maintain and manage a wetland area near the creek for wildlife habitat

# Clay County Historical and Arts Council Museum



Clay County Historical and Arts Council Museum

Hayesville, NC July 2010

1" = 20'



View of Pioneer Village from Cherokee Village



Facing the proposed Education Center on main trail

# Clay County Historical and Arts Council Museum



Cherokee Village

## Old Clay County Courthouse

### Primary Goals:

1. Showcase the history of the Clay County Courthouse Square while creating comfortable and aesthetically pleasing spaces that are functional for community events
2. Provide a “grand entry” into the downtown square from Business 64 that is inviting to visitors and expresses the residents’ pride in their community



## Old Clay County Courthouse

---

### To Be Done First- Most important steps

1. Grind out tree stumps
2. Bring in topsoil to sidewalk level, plant grass
3. Prune/remove dead/dying trees
4. Replant selected trees (avoid on east side of courthouse until regraded)
5. Repair stone wall (remove concrete capping), replace end caps at stairs
6. Remove round planters
7. Install new planting beds at entrances to street
8. New trash cans

## Old Clay County Courthouse

### Next Steps- As funding/public support becomes available

1. Regrade east side of courthouse
2. Continue planting trees
3. Remove rear wall and regrade to deal with road runoff
4. Install brick (or faux brick) sidewalk crossings at corners
5. Replace concrete walkways with brick walkways or repair damages
6. Install additional sidewalks where needed (especially surrounding courthouse square wall)





## Old Clay County Courthouse

### Big moves to improve the space

1. Install plantings around the building (may need to wait until building renovations are finished)
2. Continue sidewalk development in the blocks adjacent to courthouse
3. Plant street trees in the central courthouse square block
4. Build a plaza at the western corner (entrance to square from 64), redo veterans' memorial
5. Continue axial development to library as proposed in NCSU charette in 2008





## Old Clay County Courthouse

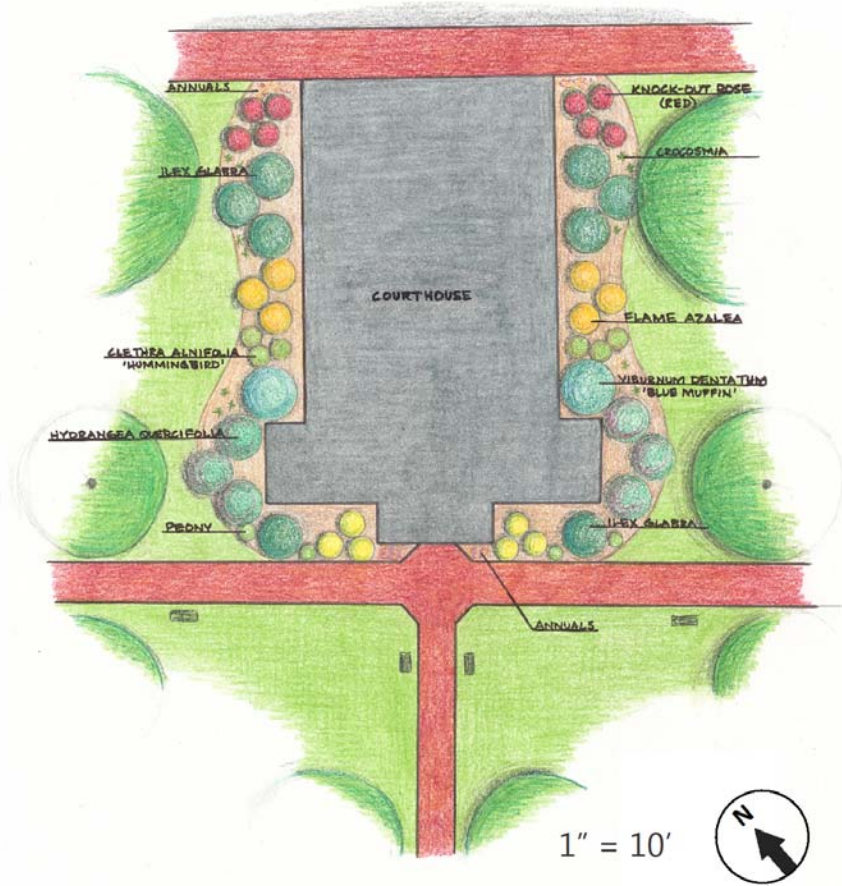


Intersection of U.S. 64 Business and Main Street at Courthouse Square

# Old Clay County Courthouse

## Old Clay County Courthouse

Hayesville, NC July 2010



Planting Plan