

Hayesville Courthouse Square

Martha Eberle DCA Intern Summer 2010



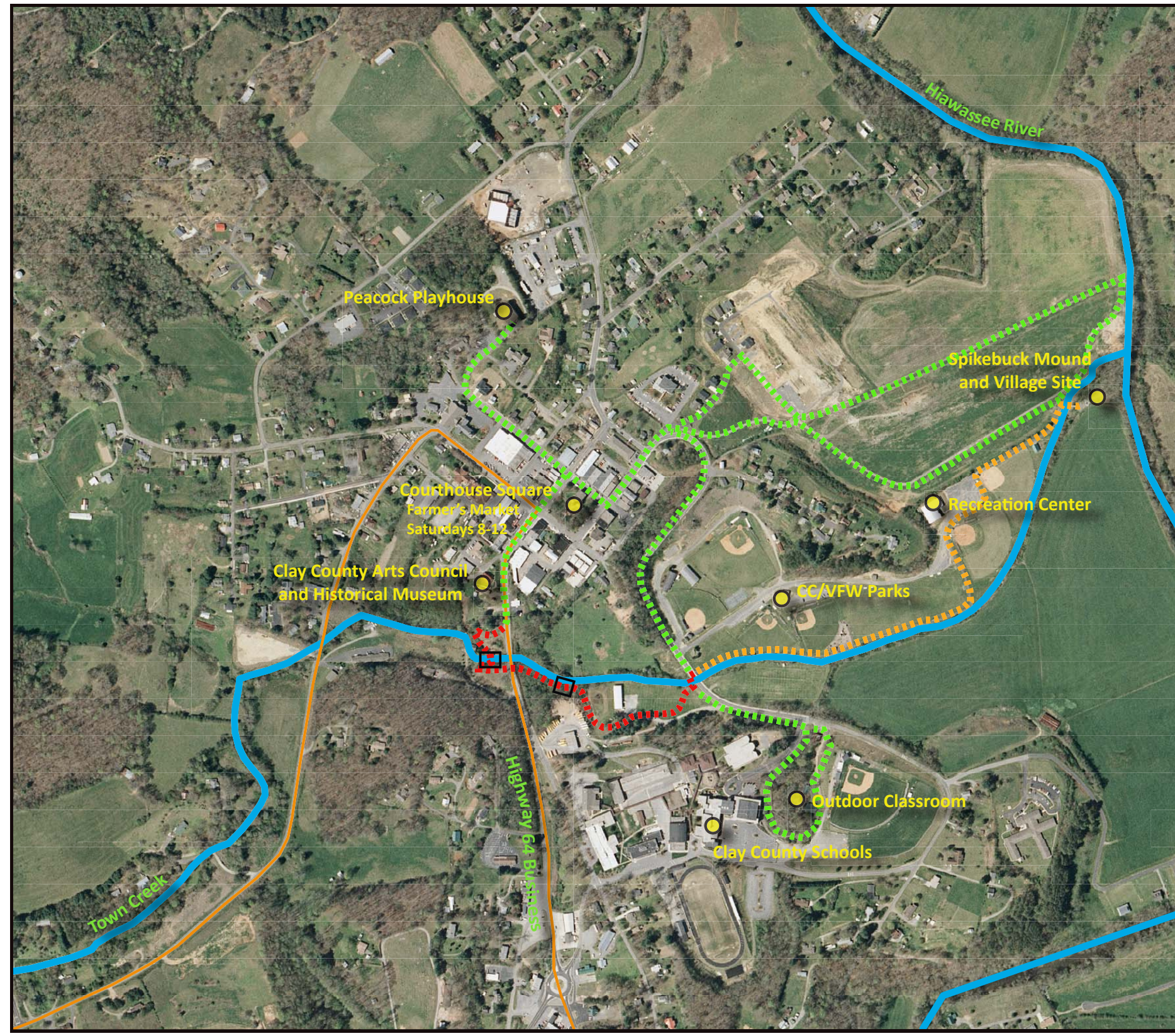
July 2010

N
1" = 20'



Hayesville Trail Network

Martha Eberle DCA Intern Summer 2010



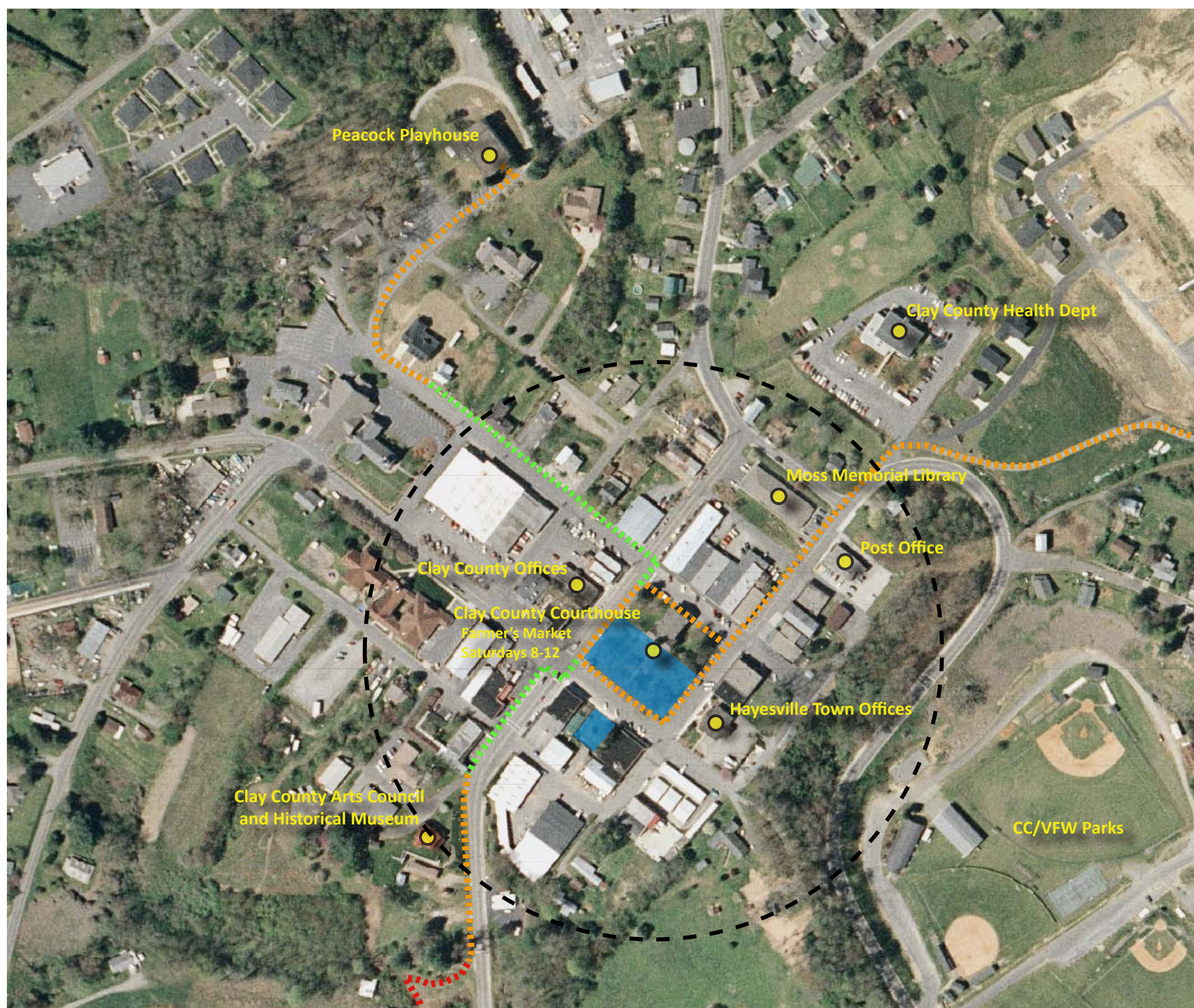
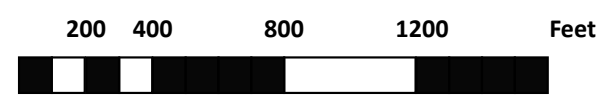
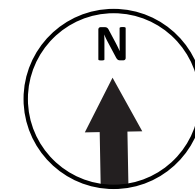
Hayesville Greenway Trails



July 14, 2010

Legend

- Existing Trail: Paved
- Proposed Connector Trail
- Possible Additional Trails
- Highway 64 Business
- Proposed Foot Bridge



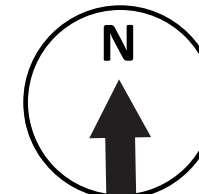
Hayesville Downtown Trail



July 14, 2010

Legend

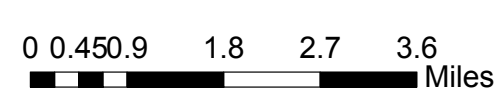
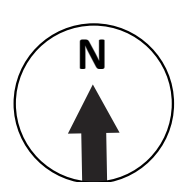
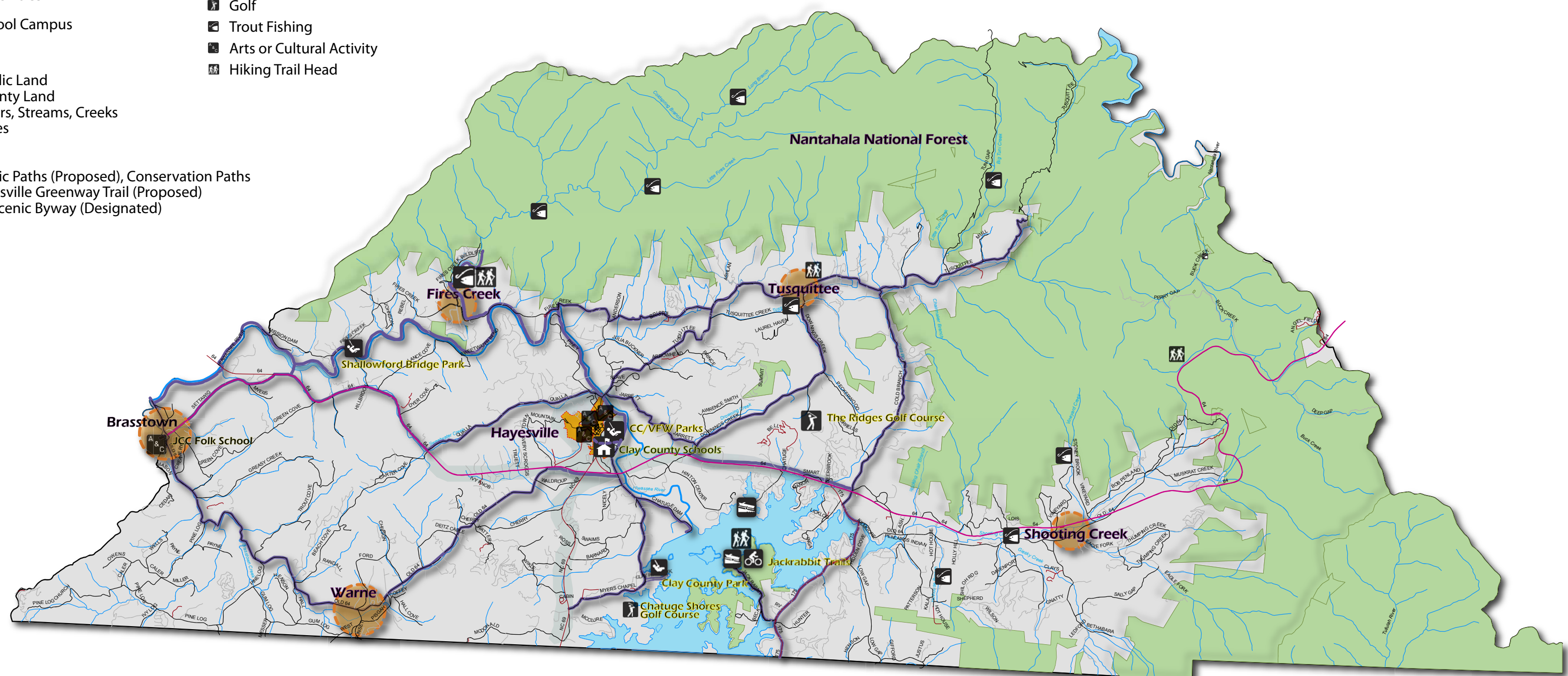
- Proposed Connector Trail
- Proposed Downtown Trail
- Sidewalk Needed
- Five Minute Walking Distance from Courthouse
- Public Green Space



Clay County Proposed Hiking and Biking Paths

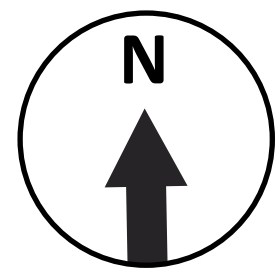
Prepared by Kristy Carter and Martha Eberle 7/14/10

- ### LEGEND
- | | |
|---|--|
| Town and Community | Recreation, Arts and Culture |
| ● Community / Rural Crossroad | Boat Ramp |
| + Hayesville | Bicycling |
| Civic Facilities | Playground |
| School Campus | Golf |
| Land | Trout Fishing |
| Public Land | Arts or Cultural Activity |
| County Land | Hiking Trail Head |
| — Rivers, Streams, Creeks | |
| Lakes | |
| Paths | |
| — Scenic Paths (Proposed), Conservation Paths | |
| — Hayesville Greenway Trail (Proposed) | |
| — NC Scenic Byway (Designated) | |



Clay County Historical and Arts Council Museum

Martha Eberle DCA Intern Summer 2010



1" = 20'

Clay County Historical and Arts Council Museum

Martha Eberle DCA Intern Summer 2010



① Perspective 1: At Cherokee village looking northwest



② Perspective 2:
Looking south from
Cherokee Village down
hill to Pioneer Village

Perspective 3: ③
Facing east on path in
front of the proposed
Education Center

